

May 11, 2023 | Intermodal

CPKC Launches Mexico Midwest Express Intermodal Service

Written by Marybeth Luczak, Executive Editor



(CPKC Photograph)

Canadian Pacific Kansas City (CPKC) on May 11 kicked off daily intermodal service between Midwest and Mexico with trains MMX-180 and MMX-181, which now link Chicago, Kansas, Texas markets, Monterrey and San Luis Potosi.

CPKC said its Mexico Midwest Express (MMX) trains offer third-day service to/from Laredo, four days to/from Monterrey, and 4.5-day service to/from San Luis Potosi. MMX provides total transit time of 98 hours from Chicago to San Luis Potosi. The railroad noted that a diverse group of shippers moving a variety of products, will use the service.

Dedicated intermodal service between Lázaro Cardenas, Mexico and Chicago began operating **proof of concept on an interline basis** in March 2022, between then Canadian Pacific and Kansas City Southern, which **merged April 14**.

“The Mexico Midwest Express offers truly best-in-class service and represents the growth potential of providing truck-competitive service and reliable rail transportation options for shippers with the newly combined CPKC,” CPKC President and CEO Keith Creel said. “This is a game changer for this essential north-south trade corridor. Customers already are signing up for these new options and we will compete hard to grow our business.”

The MMX announcement follows multi-year agreements with **Schneider** and with **Knight-Swift**, the Class I railroad announced last month.

Tags: [Breaking News](#), [Canadian Pacific](#), [Canadian Pacific Kansas City](#), [CPKC](#), [Kansas City Southern](#)

RELATED ARTICLES



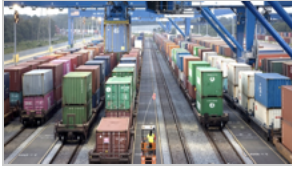
May 12, 2023 | Intermodal

Watch: BNSF Intermodal Project Update

May 12, 2023 | Class I



UP Issues 2022 ESG Report



May 12, 2023 | Intermodal

Georgia Ports Advances Inland Rail Hub Plan



May 11, 2023 | Freight

NS to Compensate East Palestine Homeowners

May 11, 2023 | Regulatory

FRA Safety Bulletin Aims to Increase Awareness of Hand-Operated Main Track Switches

SECTIONS

[News](#)

[Freight](#)

[Intermodal](#)

[Passenger](#)

[Mechanical](#)

[M/W](#)

[C&S](#)

[Safety](#)

[Finance](#)

ABOUT US

[About Us](#)

[Advertise](#)

[Contact Us](#)

[Privacy Policy](#)

CONNECT WITH US

[Subscribe](#)

[Digital Edition](#)

[Subscription Services](#)

[Newsletters](#)

[Facebook](#)

[LinkedIn](#)

[Twitter](#)

[RSS](#)

